

Sunny Beam

Wireless plant monitoring for SMA inverters



Wireless communication
with the inverters

Power supplied via
integrated solar cell or
backup batteries

Large easy to read LCD
screen

Display:

- Current Power
- Daily Yield
- Monthly Yield

Easy to use,
intuitive interface

Wall mountable

As the owner of a solar system, you have chosen a future-oriented energy source and a long-term source of income. What you need now is the ability to track the performance of your investment. Convenient and practical, Sunny Beam lets you monitor the status and yield of your SMA inverters at any time from a central location.

The Sunny Beam is easy to use and displays your system's performance data in large, easy to read formats. The Sunny Beam provides a constant flow of data keeping you informed of your system's status without the need to go outside or on the roof. Wireless technology combined with sleek design makes the Sunny Beam a welcome addition to any home or office.

For more information visit:
www.SMA.de

System performance at your fingertips

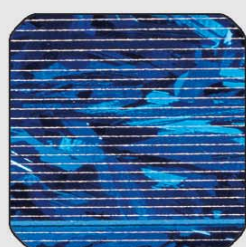
Technology and aesthetics

Easy system monitoring and all the important data at a glance: Sunny Beam combines these functions with an appealing design. It can be used anywhere indoors as a table-top or wall-mounted unit. Its large dual-mode display shows a daily graph, the current power, the total energy yield, the current day's energy yield and a monthly summary in the form of a bar chart.

Additional information such as the power from individual inverters, the energy yield in dollars or the CO₂ emission savings can be viewed easily at the touch of a button. Sunny Beam features a rotating push button control for quick and easy menu navigation.



Complete system monitoring with no extra wiring



Power supplied via **solar cell** and rechargeable batteries

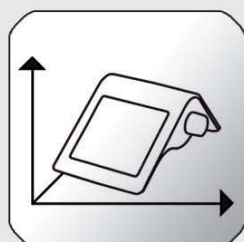
Wireless communication with the inverters



USB port for data transfer to the PC and charging of the batteries



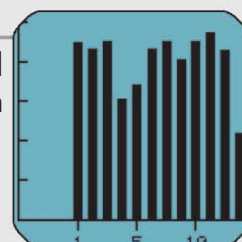
Easy to use, intuitive operation with a **single button**

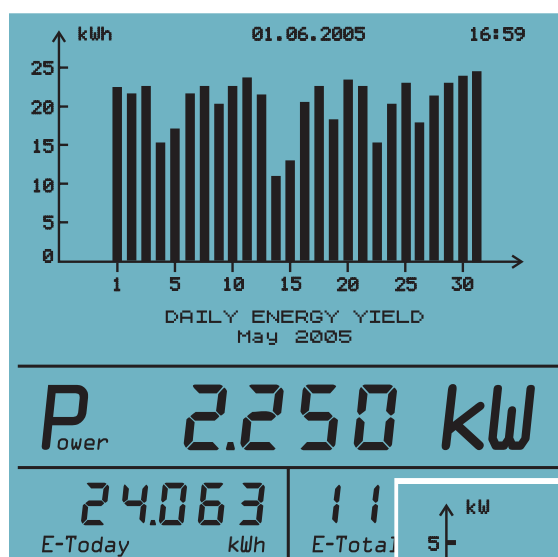


Compact and lightweight
Size: 155 x 185 x 195 mm
Weight: 350 g



Large easy to read **LCD screen**



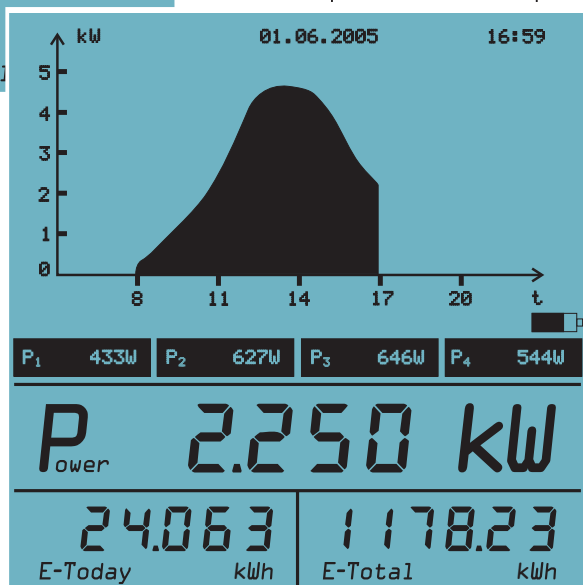


Monthly Overview



Date

Time



Graph of Daily Output Power

Battery Level

Status Line

Combined Output Power

Total Daily Output Power

Total Output Power

User-defined status line

The Sunny Beam Display incorporates a status line that can automatically scroll through additional system information. The user can select the information displayed and can choose from the following:

- Total plant power
- Individual inverter power
- Percentage output of the inverters
- Inverter device types
- Inverter serial numbers
- Yield in Dollar
- CO₂ savings

Wireless

The Sunny Beam communicates with the SMA inverters in your system effortlessly through a wireless link. Each Sunny Beam can communicate with up to four SMA inverters.

Sunny Beam is powered by a solar cell integrated into its enclosure. A battery is provided for reliability so that system data can be displayed even on days with little sunshine. This means you can position the unit anywhere in the building and always keep it

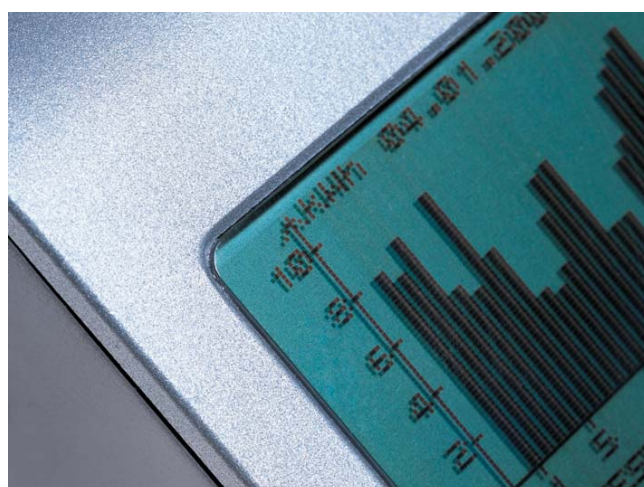
close by, providing information on the efficiency of your system. No power cable, no connecting cables. Sunny Beam gives you a convenient independent unit that completely eliminates the need for unsightly wiring – so you can enjoy your living space.

As well as its real-time display, Sunny Beam can also store yield data for the last 30 days. The integrated USB interface is used to read the saved data and to archive it on the PC by using the Sunny Data Control software included in the delivery.

Summary

Sunny Beam performs complete system monitoring and shows you how your solar system is performing – at any time and with the convenience of being wireless.

Sunny Beam versions are certified according to FCC or CE compliant. Please contact us for information on the availability of Sunny Beam in your area.



SMA's Family of Communication Solutions



Sunny WebBox

- Monitoring, remote diagnosis and long term recording of inverter operating data
- Communication with inverters via RS485 or Powerline
- System status can be viewed using any web browser
- Data stored on removable SD card
- Automatic data transfer to Sunny Portal (Ethernet or modem)



Sunny Boy Control

- Monitoring, remote diagnosis and long-term recording of inverter operating data
- Communication with inverters via RS232, RS485 or Powerline
- Daily/hourly status report
- Suitable for all systems regardless of size



Sunny Matrix

- Large-scale display for PV systems
- Dimensions: 800 x 400 mm to 800 x 1000 mm
- Weather-proof, wall-mounting
- Ethernet connection to Sunny WebBox
- Custom artwork
- Day and night function
- Variable display output: energy yield, air temperature, time, scrolling text with message etc.
- Character height: 51 mm



Sunny Portal

- Free interactive access to your PV plant
- Storage and individual display of your system data
- Remote monitoring, status and failure reports

SMA Technologie AG
Hannoversche Strasse 1-5
34266 Niestetal, Germany
Tel.: +49 561 9522 4000
Fax: +49 561 9522 4040
E-Mail: info@SMA.de
Freecall: +800 SUNNYBOY
Freecall: +800 78669269



Order your free catalog at:
www.SMA.de

Supplied by:



www.SMA.de

